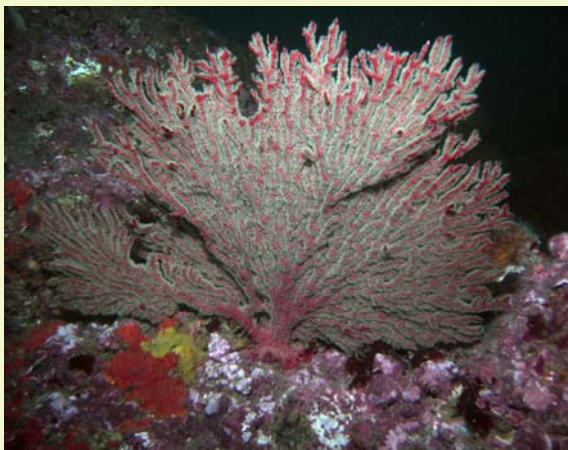




Moon Island *The Arch*



The area of reef east of Moon Island is dominated by a wall that drops off from 12 to 16 m and a large area of big rocks and bommies strewn further to the east. Once the depth reaches 18 m or deeper, and over the Arch, the growth on the rocks changes from kelp to sponges, bryozoans and ascidians.



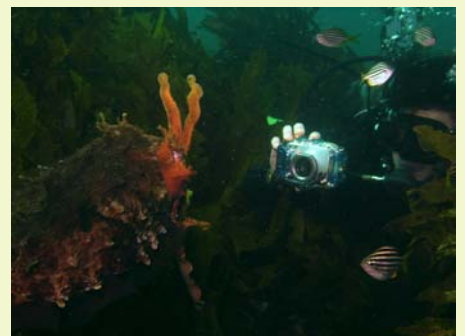
This colourful area is quite fascinating and you can see a lot of variety without having to swim far. Starfish and Crinoids are really abundant and the observant diver will see several species of Nudibranch. Fish life there is different from what we usually see at inshore sites, or consists of much bigger adults. We occasionally see Weedy Sea Dragons and other interesting species include Boarfish, Reef Leatherjacket, Giant Cuttlefish, Snapper, Kingfish, Bonito, and huge Red Morwong.



Moon Island Sth Bommie



I dived the southern Bommie at Moon Island for the first time in Autumn 2009 and was quite impressed. It's located about 500 m off the coast and is shallow enough to create white-wash at its peak. The depth quickly drops to 6 to 7 m around the bommie, with large rocky boulders and overhangs with sponge and kelp continuing down to at least 12 m depth.



The depth of this dive allows quite a decent bottom time. We'll be alternating between this site and Blacksmiths Reef as second boat dives. The area contained many species of reef fish and a few Giant Cuttlefish, which become larger and more prevalent as winter gets closer. We saw as many Blue Groper here as I can remember seeing at any dive site.